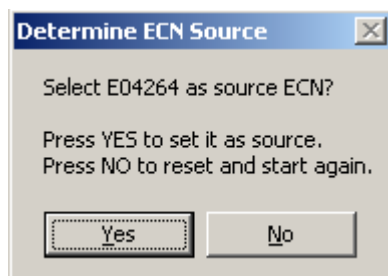
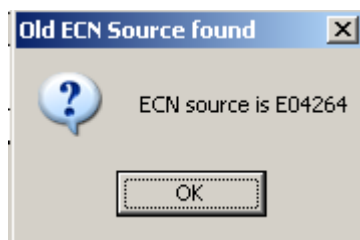
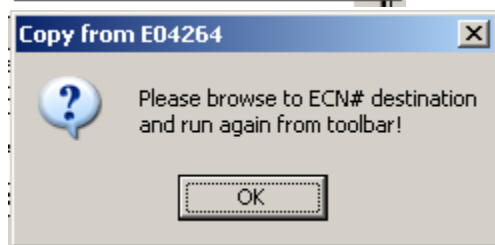
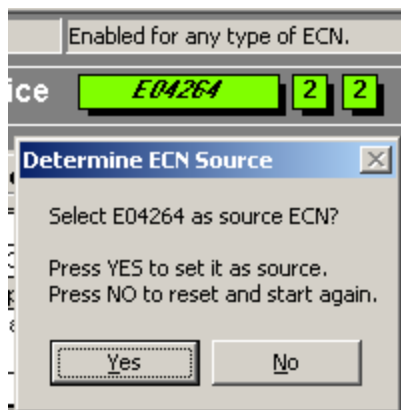
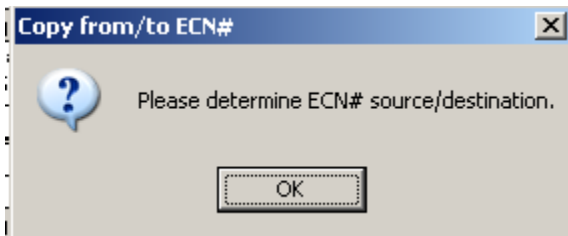
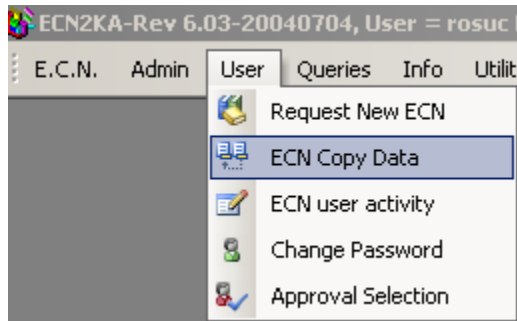


## How to copy data from ECN# source to ECN# destination



This procedure will copy **Supporting Documents, Items Change, Docs Change, and BOM** data from a SOURCE ECN# into a DESTINATION ECN#. Please note that this procedure does not copy a selection of records but all the records in a given tab under a certain ECN# into another ECN#.

If you have not stored previously an ECN# SOURCE then position the database on that ECN# from where you want to import data. If you have already a stored ECN# SOURCE position the database on the desired ECN# DESTINATION.

Select from toolbar **User/ECN Copy Data**.

A timed pop-up message will mark the beginning of the data copy session for a scenario without stored source.

ECN Copy Data procedure takes in account in what **PHASE & TYPE** is the ECN# DESTINATION.

In **PHASE 0** the ECN **ACTIVE ORIGINATOR** is allowed to perform this action. A password is required to go to the next step.

In any other ECN PHASE only the generic **Admin** user can continue this procedure.

In the sample provided E04264 will be defined and stored as ECN# SOURCE. If this is not the desired ECN# SOURCE press NO to reset it, point the database from where you want to copy, and select again from toolbar **User/ECN Copy Data**.

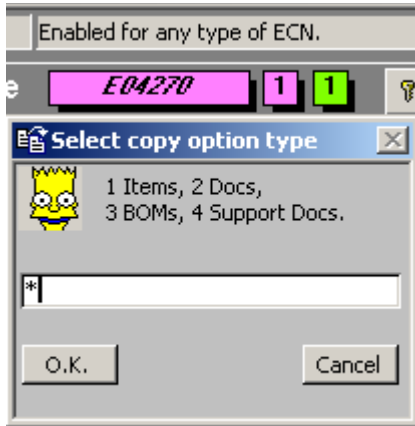
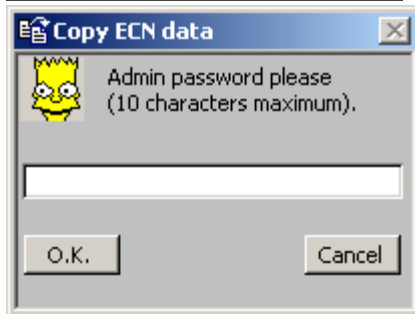
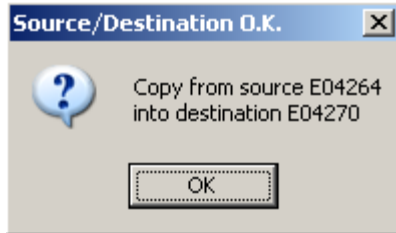
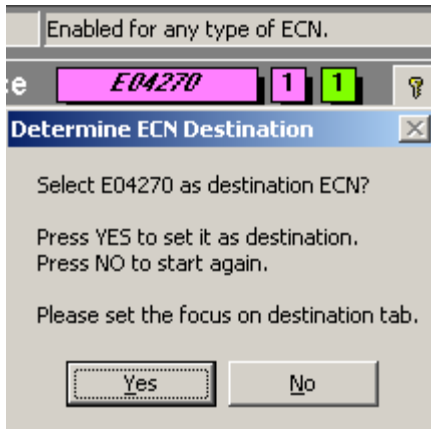
A timed pop-up message marks E04264 as stored ECN# SOURCE. The user must now point the database to that ECN# where the data should be copied (ECN# DESTINATION).

The user browse the database to the ECN# destination and **set the focus on the destination tab** Supporting Documents, Items Change, Docs Change, or BOM.

The next step will be to **select again from toolbar User/ECN Copy Data**.

The application detects the existence of a stored E04264 as ECN# DESTINATION. The user does not want to change it and clicks-on Yes to continue.

## How to copy data from ECN# source to ECN# destination



The user decides that E04270 is where wants to copy data from E04264 and clicks-on Yes command button.

Please note that E04270 is an ECN TYPE 1 and the PHASE is again 1. In PHASE 1 only the generic Admin user can continue the operation. Is Important to have placed the focus on the destination tab before selecting E04270. This way the user won't waste time to attempt to copy into an area that is not required depending of the type of ECN.

A timed message marks the successful selection of both source and destination.

In this sample (PHASE 1) only the Admin can copy.

A timed input-box asks the user to decide what type of operation is required. In this sample the user inputs 1 (Copy Items Change).

The user is informed what was successfully copied in this session.

**IMPORTANT:** depending on what type of index was set for the linked tables involved in this procedure, a duplicate record under the destination ECN# tab might be allowed or not. This scenario is possible if the user performs multiple ECN Copy Data sessions targeting the same ECN# destination tab.

The ECN user (Originator or Admin) is due to verify that he does not duplicate records under the same ECN# tab and to modify or delete them manually (one by one) in each copied destination tab.

