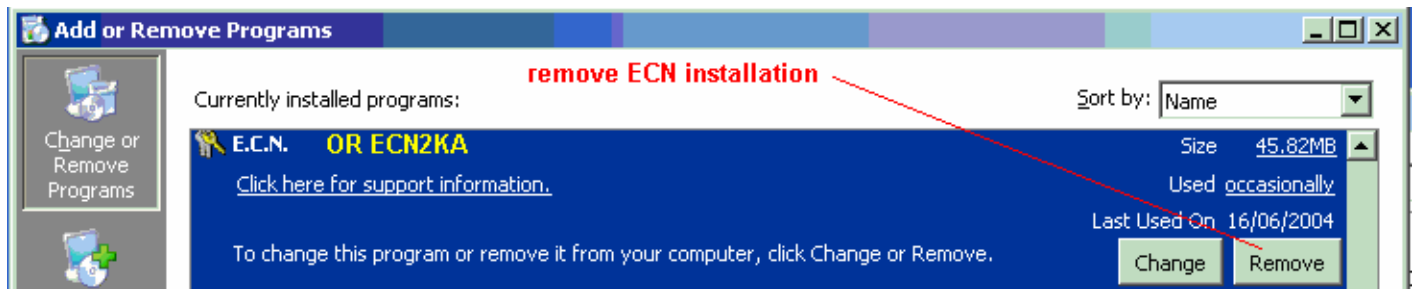


E.C.N. Database Installation

1. Remove the old installation.

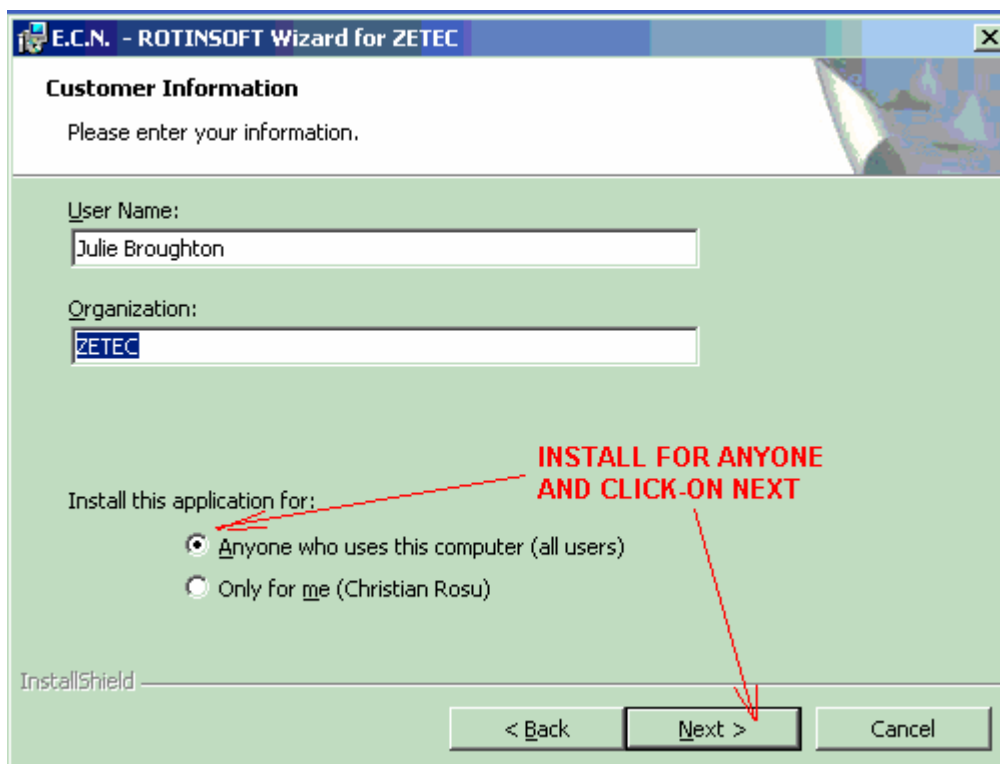


2. Install the new version:

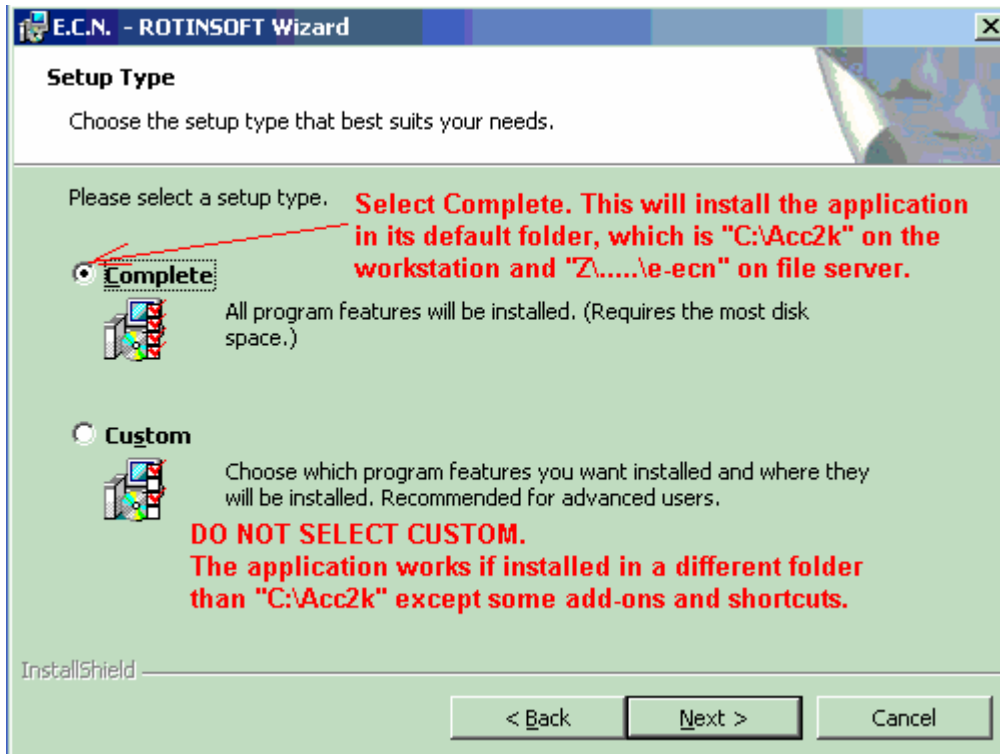
Always download the latest files from here:

http://www.rotinsoft.net/downloads/ecn_trial_full.exe (admin version MSO2002/2003) or
http://www.rotinsoft.net/downloads/ecn_trial_user_2002.exe (regular user version MSO2002/2003) or
http://www.rotinsoft.net/downloads/ecn_trial_user_2000.exe (regular user version MSO2000).

Run the setup file and install this application for anyone:

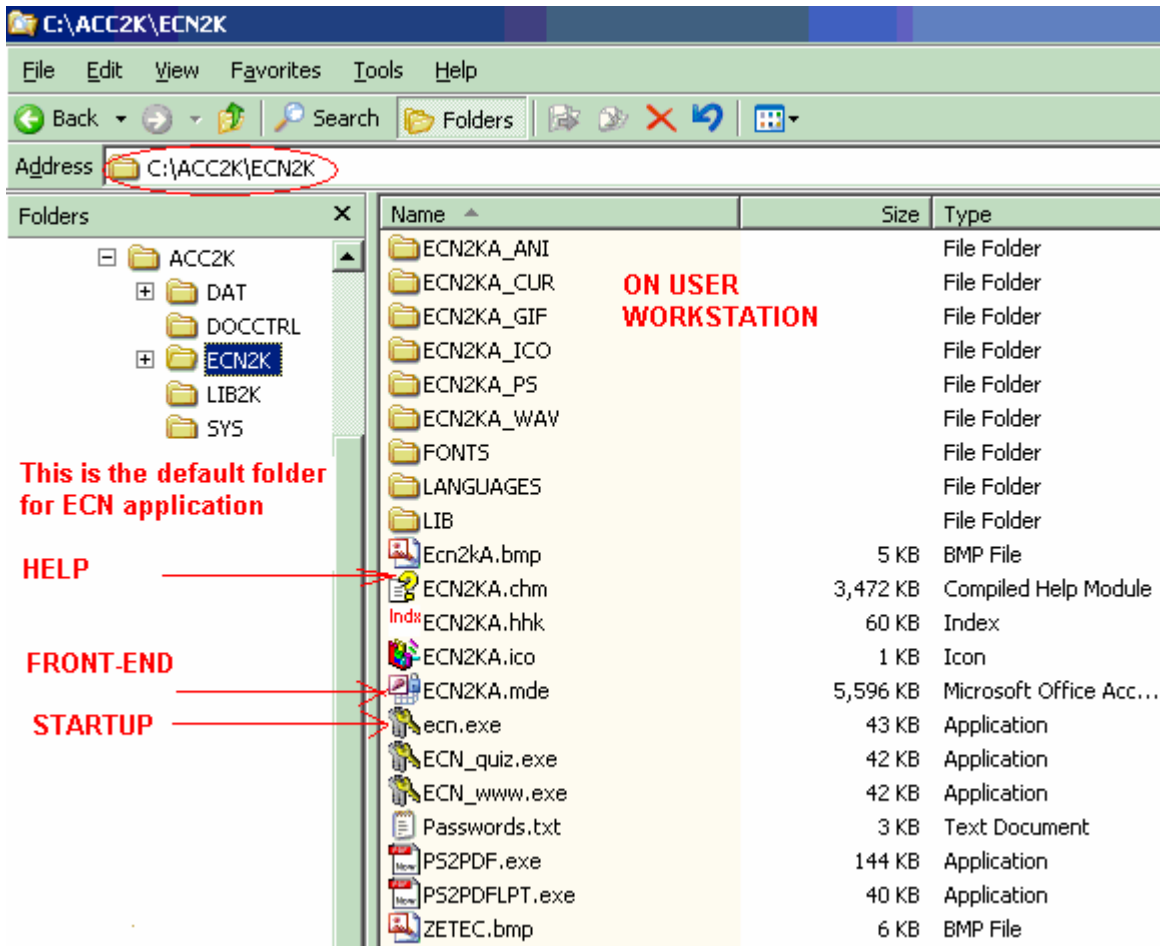


Select a "Complete" Setup Type. The Custom option should be used only if the default folder (C:\Acc2k) on user workstation is not allowed for some reason. The application will run from a different folder but some of the features (automatic update over the network) and shortcuts might fail.

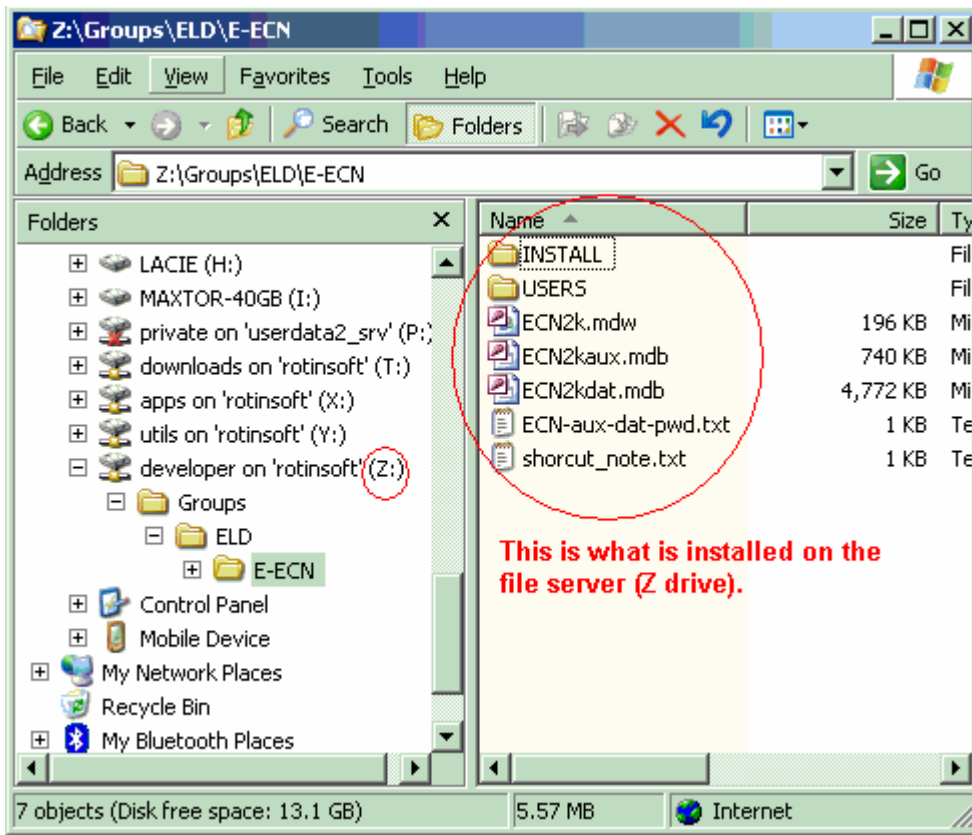


Click on Next button and select IGNORE if for some reason the setup cannot update certain files and pop-ups an error message.

This is what is mainly installed in each workstation (for both users and administrators). The administrator type of setup uploads a few more files for Replication Manager. “C:\Acc2k” is so called “front-end” application’s folder.

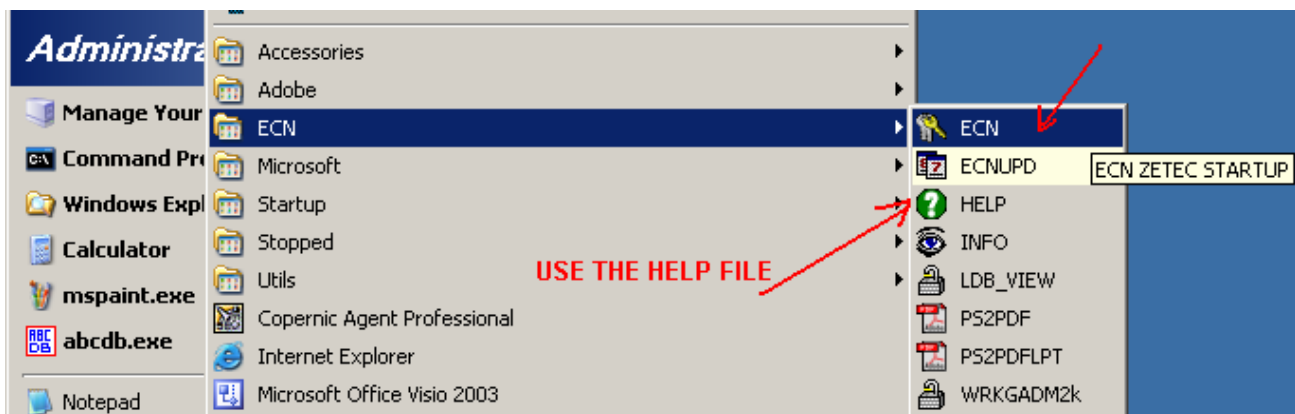


This is what will be uploaded on “Z” drive via admin type of setup.
The files won’t be removed at uninstall to avoid losing the critical information stored in the “back-end” files.

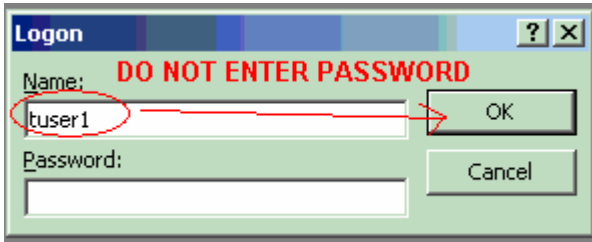


3. Start the newly installed application:

Use the shortcut on the desktop or select Start/ECN/ECN



A "Logon" pop-up appears on the screen. Enter only the user name (for example "tuser2"), leave blank the password and hit the O.K. button.



A. Generic user names to be used at the logon phase:

User id: **tuser1** to **tuser19** (team-members) password: **tusr1psw**, **tusr2psw**

User id: **muser1** to **muser2** (management) password: **musr1psw**, **musr2psw** ...

User id: **ecnadmin1**, **ecnadmin2** (document control) password: **admin1psw**, **admin2psw** ...

B. Generic Admin user to be used when the application requires administrative rights for certain tasks via a different pop-up that the one at logon phase. This password is required to open for example the user administration form.

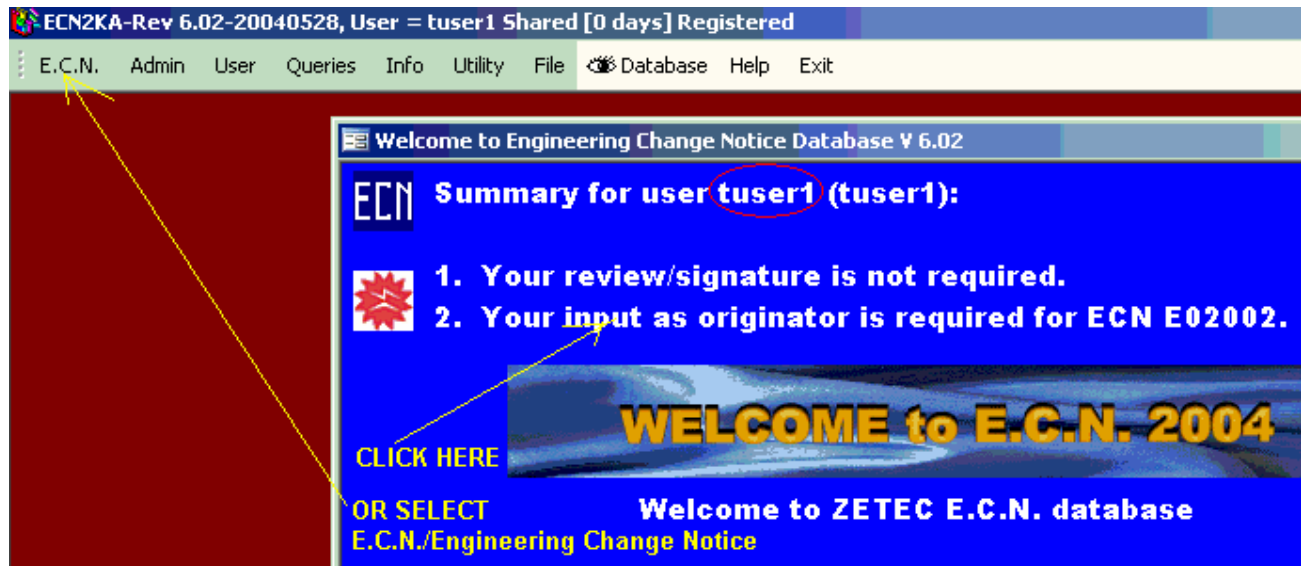
User id: **Admin**, password: **adminpsw** ("Admin" is not a valid user name at logon phase.)

C. This following password is used to open the "ecn2kdat.mdb" and "ecn2kaux.mdb" files on the Z drive (**maintenance purpose**).

Database back-end password: **ecnpass**

Note: all the above user names and passwords will be replaced by the generic user Admin with real user name and passwords. The setup package installs a sample version of user configuration.

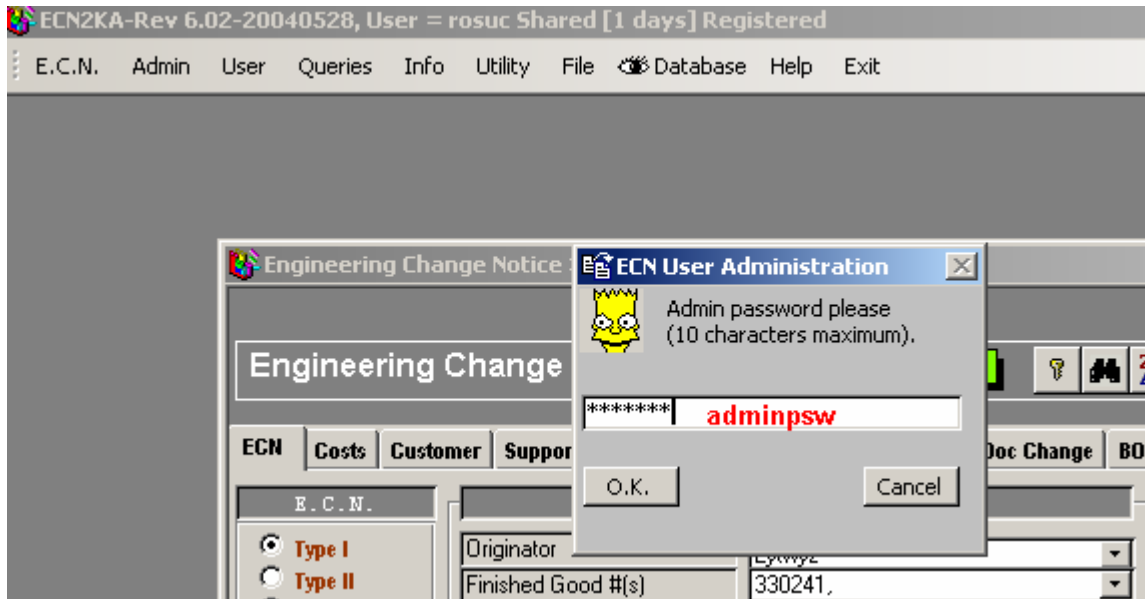
4. Welcome from with user specific info



5. The actual ECN editor appears on the screen.

Get familiar with the application tabs. Use the Help file for more information.

Click-on the top toolbar Admin/ECN user admin. This is a sample where the generic Admin password is required. Note that all pop-up messages will auto-close after a time delay of inactivity to avoid application's lookup.



6. Configure ECN users list.

This step should be done only after you get familiar enough with the application. Note that the generic Admin user password can be changed from **ECN user admin** form. Do not delete this Admin user name; delete all the sample users that come with the setup package.